

DRAWING IS PRODUCED USING THE IRISH TRANSVERSE MERCATOR (ITM) GEOGRAPHIC COORDINATE SYSTEM

A1

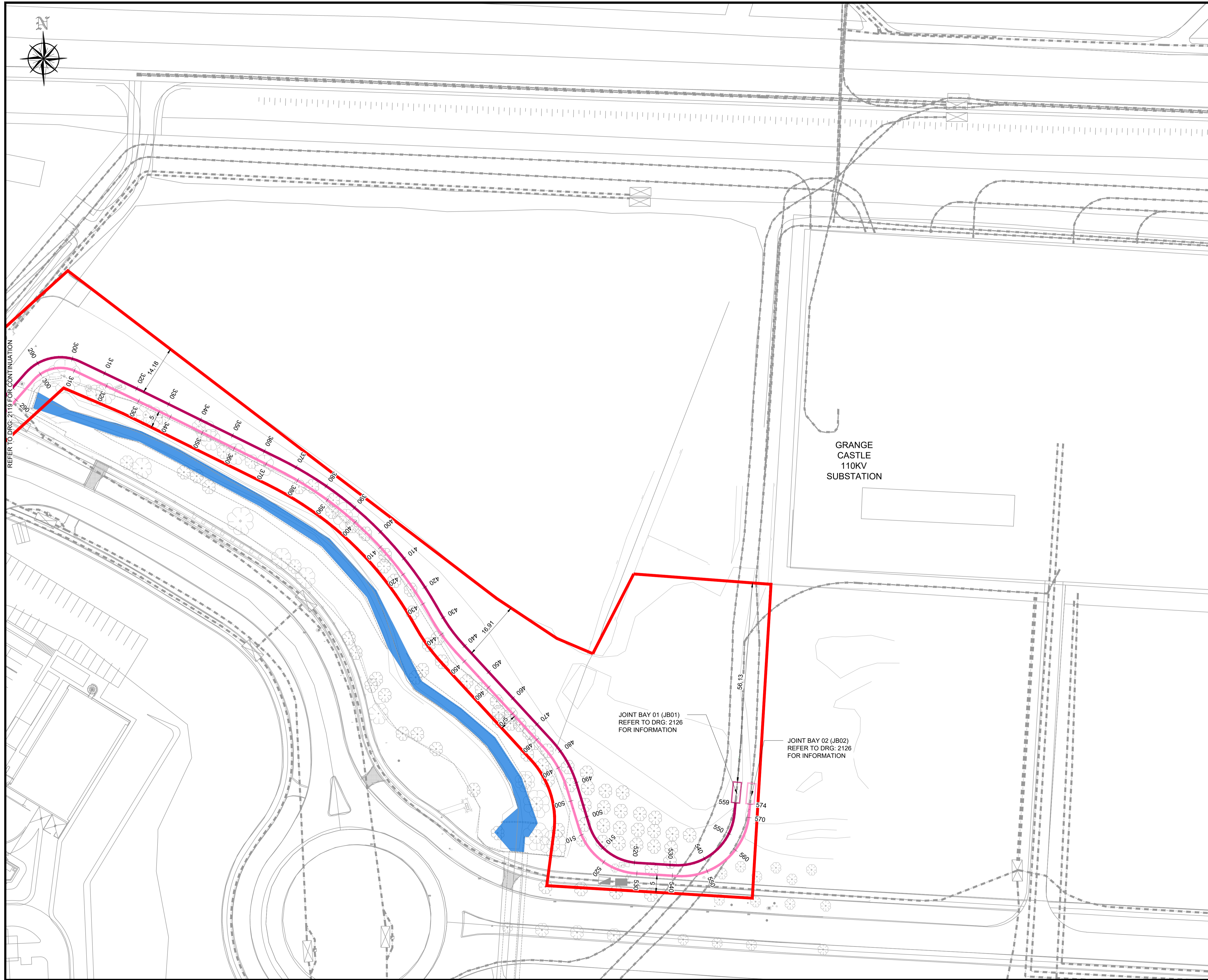
LEGEND:

- PLANNING BOUNDARY
- PROPERTY BOUNDARY
- PROPOSED 110KV GRANGE CASTLE TO COOLDERRIG No.1 CIRCUIT
- PROPOSED 110KV GRANGE CASTLE TO COOLDERRIG No.2 CIRCUIT
- PROPOSED FUTURE 110KV DUCTING
- PROPOSED COMMS CABLES
- - - EXISTING MV/LV UNDERGROUND CIRCUITS
- - - EXISTING 110KV UNDERGROUND CIRCUITS
- - - EXISTING PUBLIC LIGHTING LINES
- █ EXISTING GRIFFEEN RIVER
- █ COOLDERRIG SUBSTATION COMPOUND UNDER CONSTRUCTION AS PERMITTED UNDER SDCC REG. REF: SD18A/0298

NOTE:

1. THE CABLE DUCTING DEPICTED IN THIS DRAWING IS TO OUR BEST KNOWLEDGE THE INTENDED ALIGNMENT ROUTE. ON INSTALLATION SOME MINOR ADJUSTMENTS MAY ARISE AS PREVIOUSLY UNIDENTIFIED UNDERGROUND SERVICES OR SIMILARLY UNFORESEEN OBSTRUCTIONS MAY ARISE. THE CURRENT ALIGNMENTS WILL BE ADJUSTED TO SUIT ACCORDINGLY.

REFER TO DRG: 2119 FOR CONTINUATION



P09	ISSUE FOR PLANNING	DW	BV	09.04.21
P08	FOR DISCUSSION	DW	BV	01.04.21
P07	FOR DISCUSSION	-	-	-
P06	FOR DISCUSSION	-	-	-
P05	FOR DISCUSSION	-	-	-
P04	FOR DISCUSSION	-	-	-
P03	FOR DISCUSSION	-	-	-
P02	FOR DISCUSSION	-	-	-
P01	FOR DISCUSSION	-	-	-

Rev	Description	Drawn	Checked	Date

**Clifton Scannell Emerson Associates**  
 Associates Limited  
 Consulting Engineers,  
 Seafort Lodge,  
 Castledawson Avenue,  
 Blackrock, Co. Dublin,  
 Ireland, A94 P768  
 T: +353 1 288 5006  
 F: +353 1 283 3466  
 E: info@csea.ie  
 W: www.csea.ie

<b>Client</b>		BCEI	
<b>Project</b>		EDGECONNEX SUBSTATION 110KV CABLE ROUTE	
<b>Dwg. Title</b>		OVERALL PROPOSED GRID ROUTE PLAN SHEET 02	
Drawn By	DW	Date	MAR 2021
Checked By	RG	Scale	1:500 @ A1
Project Code	Originator	Zone/Phase	Level Type
20_167 - CSE - GEN - ZZ - DR - C - 2120		Dwg. No. 20_167	
<b>Status Code</b>		FOR INFORMATION	
S2		PLANNING	
P09		Project Status	